

Site Plans

The following pages show three site plans. The first page shows the entire park with topography and wetlands. The topography is generally gentle throughout the park in the upland areas. The second page shows possible building configurations for prospective site areas to the west of Venture Drive. It is important to understand that these are not lots but only suggested configurations. It is also important to understand that these buildings were derived from GIS data and do not have the accuracy of engineered drawings. The third drawing shows prospective buildings to the east of Venture Drive accessed from a new road to be built across from Quality Way.

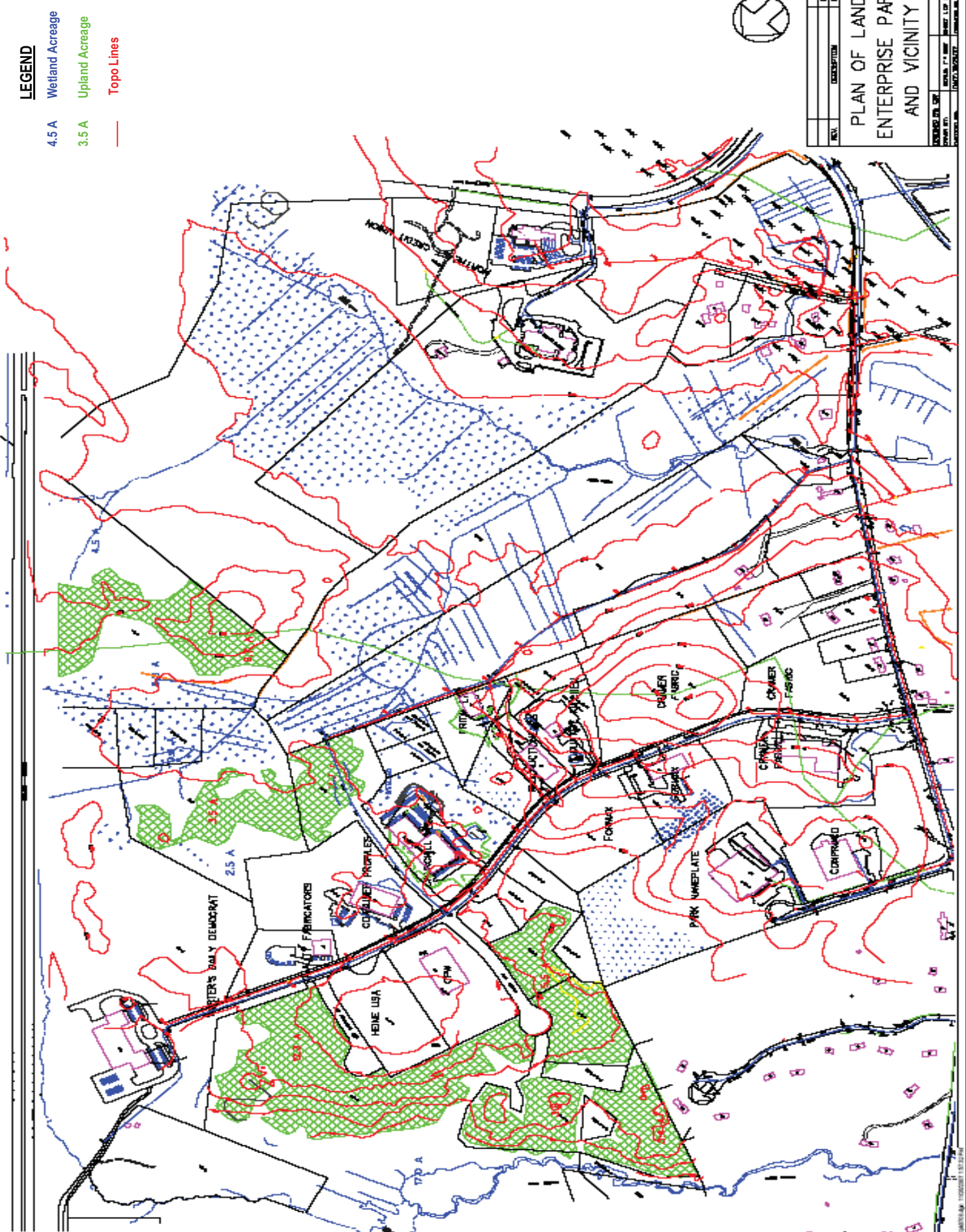
LEGEND

- 4.5 A Wetland Acreage
- 3.5 A Upland Acreage
- Topo Lines

REV.	DESCRIPTION	DATE

PROJECT NO.	
DATE	
SCALE	
PROJECT	

**PLAN OF LAND
ENTERPRISE PARK
AND VICINITY**



POSSIBLE BUILD OUTS

